

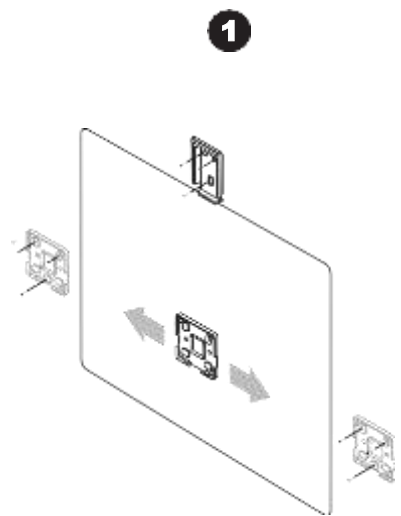


kaptivo

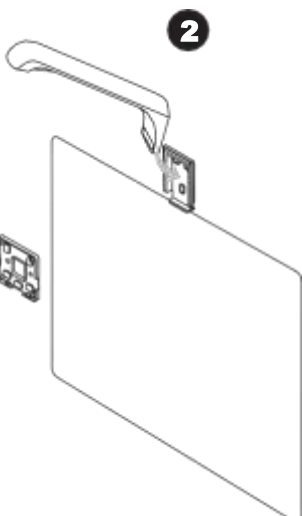


Quick Start Guide

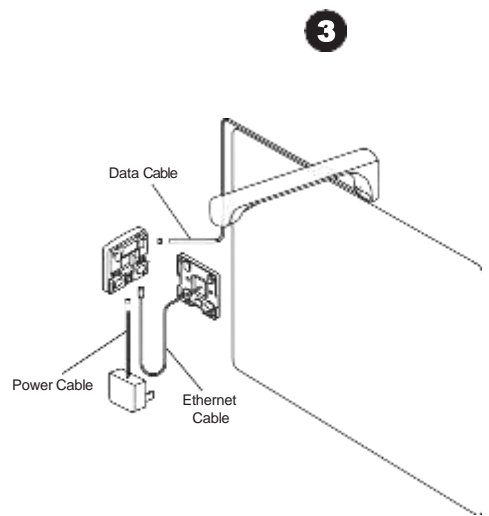
Kaptivo Setup



Install the rectangular Kaptivo mounting plate centered above board. Then install the square control pad mounting plate on your preferred side of the board. Use supplied screws.
Maximum board size: 6 ft x 4 ft (1.8m x 1.2m).

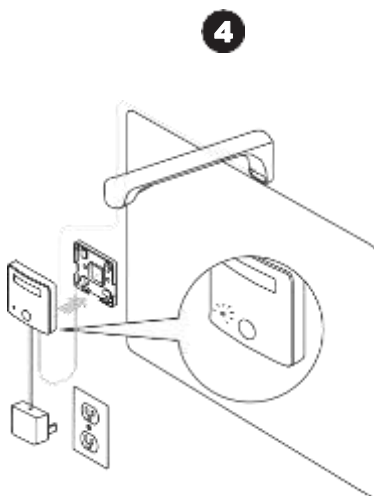


Slide Kaptivo unit onto mounting plate.

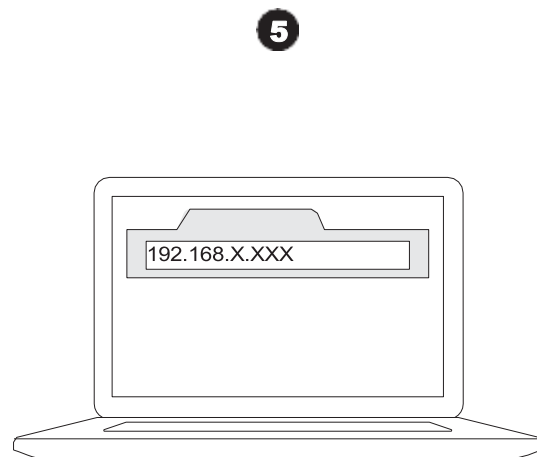


Wi-Fi Connection: Connect Kaptivo data cable and USB power cable to their respective sockets inside the control pad.

Ethernet Connection: Connect Kaptivo data cable, USB power cable, and Ethernet cable to their respective sockets inside the control pad. If Ethernet includes power, the USB power cable is not needed

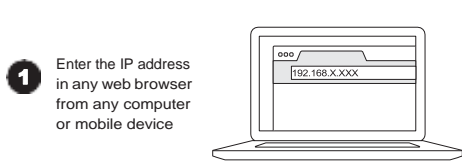


Push the control pad onto the mounting plate. Plug in the power adapter to outlet if power is not supplied by Ethernet connection.

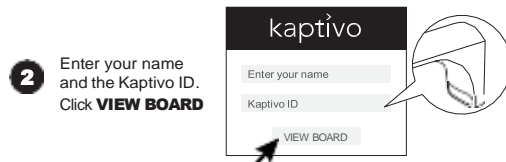


Complete the setup and activate your account by going to the **IP Address of your Kaptivo** in any web browser (check Kaptivo mode switch guide to know how to access the IP address of your Kaptivo).

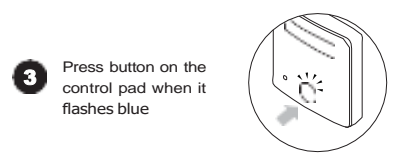
Using Kaptivo



1. Enter the IP address in any web browser from any computer or mobile device



2. Enter your name and the Kaptivo ID. Click **VIEW BOARD**



3. Press button on the control pad when it flashes blue

You will now see your whiteboard online.

- To invite someone to view your board, select **PARTICIPANTS**
- To view any changes to the board, select **TIMELINE**
- To download content as a PDF, select **DOWNLOAD**

To change network settings or move Kaptivo to another board:

Enter the **IP address of your Kaptivo** in any web browser, click on **Config** button in top right and access the network configuration from the admin panel.

Important Safety Information / Consignes de Sécurité Importantes

- Only use the power supply and cabling provided with your Kaptivo. Using alternate power supplies or cables may invalidate your warranty and the Safety Approvals of your Kaptivo.
- Only connect the Kaptivo as per the instructions in this manual. None of the individual parts of the Kaptivo system (power supply, power cord, control pad or main unit) are suitable for connection to any other device.
- Ensure that the power socket outlet is located close to the Kaptivo and is easily user accessible.

Regulation Information

This device complies with Part 15 of the FCC Rules. Operation is subject to the following two conditions:

- This device may not cause harmful interference, and
- This device must accept any interference received, including interference that may cause undesired operation.

Changes or modifications not expressly approved by the party responsible for compliance could void the user's authority to operate the equipment.

This equipment has been tested and found to comply with the limits for a Class B digital device, pursuant to Part 15 of the FCC Rules. These limits are designed to provide reasonable protection against harmful interference in a residential installation. This equipment generates, uses and can radiate radio frequency energy and, if not installed and used in accordance with the instructions, may cause harmful interference to radio communications. However, there is no guarantee that interference will not occur in a particular installation. If this equipment does cause harmful interference to radio or television reception, which can be determined by turning the equipment off and on, the user is encouraged to try to correct the interference by one of the following measures:

- Reorient or relocate the receiving antenna.
- Increase the separation between the equipment and receiver.
- Connect the equipment into an outlet on a circuit different from that to which the receiver is connected.
- Consult the dealer or an experienced radio/TV technician for help.

This equipment complies with the FCC radiation exposure limits set forth for an uncontrolled environment and meets the FCC radio frequency (RF) Exposure Guidelines and RSS-102 of the IC radio frequency (RF) Exposure rules. This equipment should be installed and operated keeping the radiator (located within the Kaptivo Unit) at least 7.9 inches (20cm) or more away from person's body. This device must not be co-located or operated in conjunction with any other antenna or transmitter.

Canada

This Device complies with Industry Canada License-exempt RSS standard(s). Operation is subject to the following two conditions:

- This device may not cause interference, and
- This device must accept any interference, including interference that may cause undesired operation of the device.

Under Industry Canada regulations, this radio transmitter may only operate using an antenna of a type and maximum (or lesser) gain approved for the transmitter by Industry Canada. To reduce potential radio interference to other users, the antenna type and its gain should be so chosen that the equivalent isotropically radiated power (e.i.r.p.) is not more than that necessary for successful communication.

Le présent appareil est conforme aux CNR d'Industrie Canada applicables aux appareils radio exempts de licence. L'exploitation est autorisée aux deux conditions suivantes:

- L'appareil ne doit pas produire de brouillage, et
- L'utilisateur de l'appareil doit accepter tout brouillage radioélectrique subi, même si le brouillage est susceptible d'en compromettre le fonctionnement.

Conformément à la réglementation d'Industrie Canada, le présent émetteur radio peut fonctionner avec une antenne d'un type d'un gain maximal (ou inférieur) approuvé pour l'émetteur par Industrie Canada. Dans le but de réduire les risques de brouillage radioélectrique à l'intention des autres utilisateurs, il faut choisir le type d'antenne et son gain de sorte que la puissance isotrope rayonnée équivalente (p.i.r.e) ne dépasse pas l'intensité nécessaire à l'établissement d'une communication satisfaisante.

Technical Support

kaptivo.com
Visit our website at kaptivo.com/support to view forums, browse frequently asked questions (FAQ) pages, or request assistance.
Part No. DL-10418-070

kaptivo



kaptivo.com